



SERRE CHEVALIER BRIANÇON

HAUTES ALPES

20
TERRE
DE JEUX
24

PREPARATION FOR OLYMPIC GAMES

CLIMBING

SPOT GUIDE



BRIANÇONNAIS

Serre Chevalier Valley Briançon is THE mountain and climbing destination in the northern Hautes-Alpes, with a fabulous playground between 1,200 and nearly 4,000 m in altitude.

Briançon is located at the meeting point of several valleys and has been the host of the climbing World Cup for over 30. The villages of Serre Chevalier stretch westward to the mythical Lautaret and Galibier passes and offer a vast territory for climbing in all its forms.

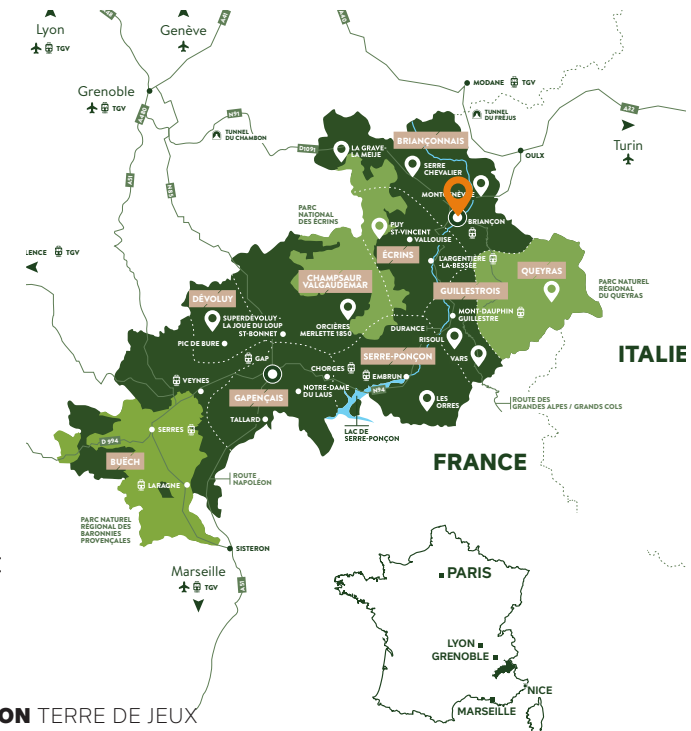
Between the high mountains of the Écrins National Park and the Guisane valley, even the very best climbers will find challenging routes.

There is a huge variety of rock types at every conceivable altitude and aspect, with bolted routes, single and multi-pitch routes and bouldering. The scope for training is exceptional here all year round.

ACCESS

By plane
Turin Caselle Airport
(Italy - 115 km)

By train
TGV to Oulx
TGV station
(Italy - 105 km)
then shuttle
to Briançon
(40 minutes).
Night train:
Paris - Briançon direct





SETTING

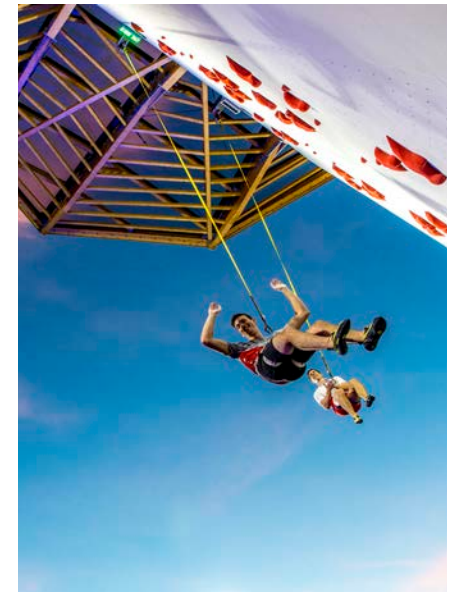
ALTITUDE TRAINING

Far from pollution, and at high altitude, physical preparation takes place in a dry climate with Mediterranean influences, boasting 300 days of sunshine per year. Serre Chevalier Vallée Briançon guarantees a stay of physical preparation in altitude up to 4 000 m, with its numerous mountain huts in the heart of the Ecrins National Park. All this is completed by a natural hot spring at 44°C in Monêtier-les-Bains, a thermal

bathing center with indoor and outdoor pools of 300m² each, perfectly adapted to relaxation and physical recovery.

ACTIVITIES

- Hiking
- Mountain biking, cycling
- Climbing, mountaineering
- White water activities
- Paragliding
- Culture and heritage



OUTDOOR CLIMBING

Serre Chevalier Briançon offers many outstanding climbing sites in the immediate vicinity.

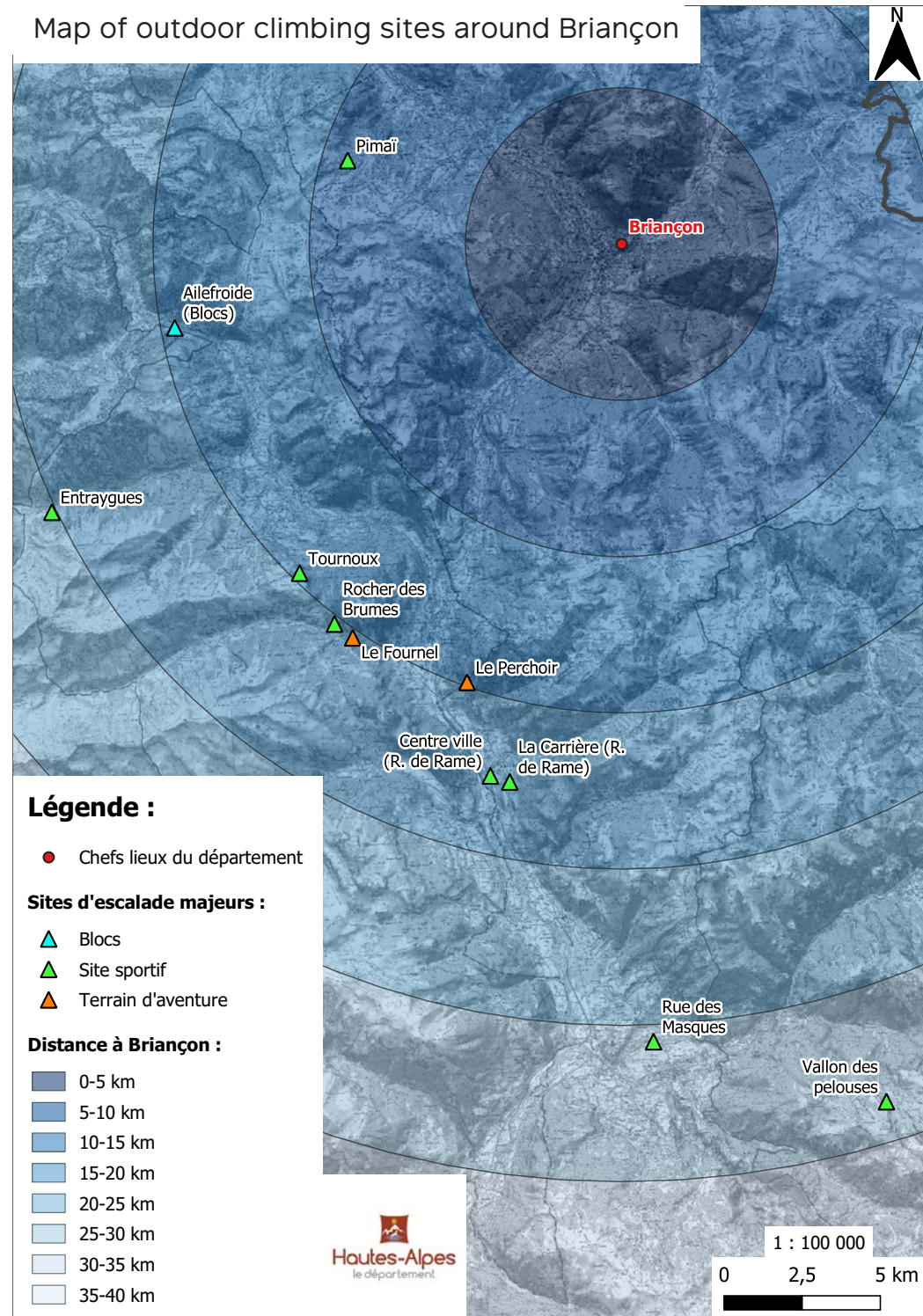
The number of high level routes located within 30 minutes of Briançon is exceptional (Ailefroide,

Entraygues, Le Fournel, Rocher Maubert, etc.).

One and a half hours' drive from Briançon is the world famous spot, Céüse. It is a climber's paradise with over 400 routes ranging from 5a to 9c.



Map of outdoor climbing sites around Briançon



THE NEW CLIMBING WALL A WORLD REFERENCE

It's all there! Exceptional natural environment, architectural gesture, variety of routes and impressive levels of difficulty. The outdoor climbing wall of **Briançon** (Hautes-Alpes, France) is already considered a world reference by the specialists.

Protected by a large roof, it can be used outdoor **whatever the weather conditions**, it offers **1,061 m² of climbing surface** and **a hundred climbing routes of all levels**.



LEAD

The wall offers a world cup face based on the standards in force for the organisation of international events. This face allows to trace ten distinct lines for a development of approximately 18m. This profile allows the opening of routes from 7a to 9a and more.

At the back of this wall, a more accessible face allows warm-up, the organization of national level competitions, training and initiation. With a height of 16 to 18m, about ten lines can be equipped.

SPEED

A wall regulated for international competitions completes the world cup side with 2 dedicated lanes.

BOULDERING

A fronton of about 30 meters wide will allow the installation of a 4m high structure for the practice of bouldering. This tool will be used for training as well as for competitions of all levels.

NEW Autumn 2023, opening of an indoor bouldering facility in downtown Briançon for the general public and top-level training.

A LOCAL PERSPECTIVE



FRANCK PRIGENT

[ORGANIZER OF THE MONDIAL DE L'ESCALADE SINCE FEBRUARY 2015]

“Created in 1989, the World Cup has continued to grow while maintaining its original heritage and spirit.

From its beginnings in Villeneuve-la-Salle with Jean Marie Rey through the Military Barracks of Berwick and its emblematic organizer Philippe Ligerot, the World Cup has always evolved as climbing has. Since 2018, the World Cup has been held in the Briançon Sports Park, a site that is well adapted to the professional era and the sport's entry into the Olympics.

In a sports, nature and culture setting with a clear view of the mountains and the Vauban fortifications, the competition wall is located next to the oxygenation center, ideal for preparation and training at altitude. The final transformation of this essential site will be completed for the 2023 edition. The dreams of a training center for Olympic preparation, organization of world championships and climbing capital will become reality for this territory already known worldwide for its cliffs.”

A WORD FROM THE CHAMPION



SALOMÉ ROMAIN

[SEVERAL VICTORIES AND PODIUMS IN THE FRENCH CUP, SEVERAL FINALS IN THE FRENCH CHAMPIONSHIP, WORLD CUP TOP 14 FINISHES, 9TH IN THE WORLD GAME AND 11TH IN THE WORLD CHAMPIONSHIP.]

“Briançon is my «Land of Climbing». It's on this territory, on these walls, that I have blossomed since I was a little girl, to reach my dreams... and go higher and higher!

Depending on the weather conditions, I adapt my outings thanks to the variety of spots, their altitudes and their aspects. The Serre Chevalier Briançon valley is famous for its 300 days of sunshine per year and its Mediterranean mountain climate, which maximises the chances of having dry rock. The proximity to this wilderness

is a recipe for concentration, rest and excellence.”

Prize list:

- 7th place at the World Cup in Briançon (2017)
- 5th place at the Senior European Championship (2017)
- Gold medals at the French University Championships for difficulty and combined (2018)
- Bronze medal at the World University Championship (2018)
- 3rd place at the French Bouldering Cup in Lyon (2019)
- 3rd place at the French Championships for difficulty (2023)

20
TERRE
DE JEUX
24



© P. Domeyne, Xtreme Shooting, E. Stern, J. Novat, Blue Max Média, La Gaubert DL, R. P. / Contraste

**ASSOCIATION LES INTERNATIONAUX
D'ESCALADE DE SERRE CHEVALIER**

6, chemin de Fortville - Briançon | direction@mondial-escalade.fr

DÉPARTEMENT DES HAUTES-ALPES

Alexandra Louison • alexandra.louison@hautes-alpes.fr

